






timberfix[®] plus Hex Head Structural Timber Screw



timberfix[®] Multi-Ply Structural Timber Fastener

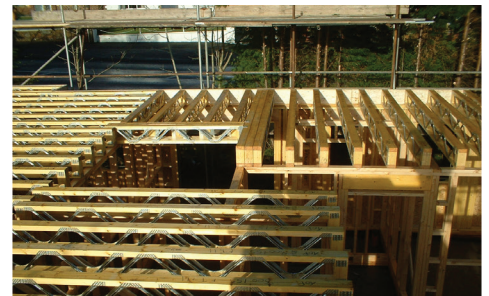


Hex drive structural timber screw, also ideal for exterior landscaping with 1000 hours salt spray resistance.

-  Fastening of multiple metal web and I-joists.
-  Characteristic design loads included within software by MiTek Industries Ltd & Wolf Systems Ltd for connecting 2 ply chords.
-  Meets the requirements of service class 1,2 & 3 according to EN1995-1-1.
-  CE compliant in accordance with EN14592:2008+A1:2012 as certified by BM TRADA
-  High quality boron steel.

Size Range:

- 6.5 x 115mm - 72mm chords
- 6.5 x 125mm - 72mm chords
- 6.5 x 150mm - 97mm chords
- 6.5 x 200mm - 122mm chords
- 6.5 x 250mm - 147mm chords



Aptus Fastener Systems Ltd
Salterwood Drive
Denby Hall Business Park
Denby, Derbyshire
DE5 8JY

Product Type Timberfix plus hex timber screw

Identification Organic coated in lengths 65mm ~ 250mm , hex flange head

Intended use Timber structures and landscaping

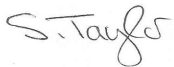
Manufacturer/Importer Aptus Fastener Systems Ltd
 Manufacturing Plant ref: 00484
 Salterwood Drive
 Denby Hall Business Park
 Denby
 Derbyshire
 DE5 8JY

Notified Testing Body
 for ITT

BM Trada
 Chiltern House
 Stocking Lane
 Hughenden Valley
 High Wycombe
 Buckinghamshire
 HP14 4ND
 NB reference 1224

Tested to : EN14592:2008+A1:2012 under system 3
 Test values not specific to fastener length
 Manufacturing plant 00484 FPC certified to ISO9001:2008

Essential Characteristics	Ref	Performance	UOM	Technical Specification	Certificate Number
Geometry	various	Complies		EN14592 section 5/6	GEOM13165TS06310041457
Yield Moment	$M_{y,k}$	15688	Nmm	EN14592 clause 6.3.4.1-6.3.4.2 to EN409:2009	YMTS063100F1316541460
Withdrawal Parameter	$f_{ax,k}$	15.1	Nmm ²	EN14592 clause 6.3.4.3 to EN1382:1999 characteristic timber density C16 310 Kg/m ³	WDRAWF13165TS06310041457
Head Pull through Parameter	$f_{head,k}$	18.7	Nmm ²	EN14592 clause 6.3.4.4 to EN1383:2007 characteristic timber density C16 310 Kg/m ³	PUTHRF13165TS06310041464
Characteristic Tensile Capacity	$f_{tens,k}$	17.2	kN	EN14592 clause 6.3.4.5 to EN1383:2007	PULOFFF13165TS06310041459
Characteristic Torsional Strength	$f_{tor,k}$	17.95	Nmm	EN14592 clause 6.3.4.6 to EN10666	TQSTRF13165TS06310041443
Characteristic Torsional Ratio	$f_{tor,k}/R_{tor,k}$	2.8 Complies		EN14592 clause 6.3.4.6 to EN15737:2009 characteristic timber density C16 310 Kg/m ³	TQRESF13165TS06310041451
Material		C1022or10B21		Carbon steel to EN10016	FPC
Durability		Organic		Service class 3 according to EN1995-1-1	FPC



Stewart Taylor - Director
 On behalf of Aptus Fastener Systems Ltd